

“A hole in the ground isn’t as pretty as a hole in the ground with  
park amenities around it”

Rodney Dormitory Stormwater Management Pond and Park

2019 RASCL Summit

November 15, 2019

# AGENDA

- ▶ Project Background
- ▶ Stormwater Management
- ▶ Public Participation
- ▶ Draft and Preferred Concepts
- ▶ Question and Answer Session



# PROJECT TEAM – ROLES AND RESPONSIBILITIES



**Tim Filasky, PE**  
*Interim Dir. Public Works and  
Water Resources*



**Kelly Bachman**  
*Communications Manager*



**Tom Coleman, PE**  
*Acting City Manager*



**Joe Spadafino**  
*Director of Parks and Recreation*



**Christopher Brendza, PE**  
*Project Manager*



**Elisabeth McCollum, CPSM**  
*Public Participation*



**Jay Kelley, PE**  
*Stormwater Management*



**Andrew Mears, PLA**  
*Parks / Recreation*



**Amanda Finnerty**  
*Brownfields / Demolition*



# Rodney Dormitory Site Stormwater Project

## PROJECT SITE AERIAL



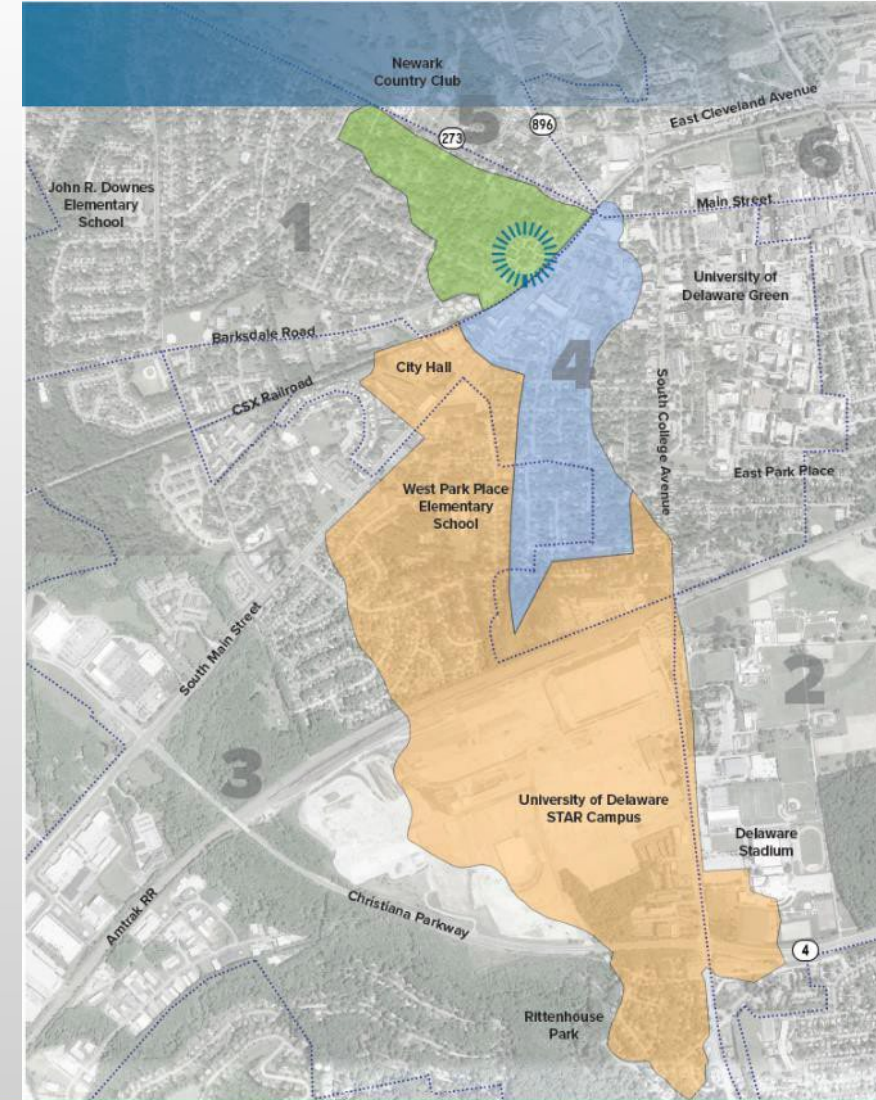
# PROJECT HISTORY

- ▶ Fall 1966: Rodney Dormitory opened
- ▶ Spring 2014: Rodney Dormitory closed
- ▶ Spring 2015: City begins preliminary Due Diligence (cost estimating and planning)
- ▶ March 2017: City Council votes to enter into purchase agreement with UD
- ▶ July 2017: Workshop #1 held to help determine overall design components
- ▶ September 2017: Workshop #2 held to present 3 concepts designed using public feedback
- ▶ November 2017: Workshop #3 held to present preferred concept
- ▶ December 2017: Preferred Concept presented to City Council for approval
- ▶ June 2018: Referendum Passes
- ▶ December 2018: Environmental Remediation begins
- ▶ September 2019: Demolition begins
- ▶ Fall 2020: Anticipated Completion

# Stormwater Management

# STORMWATER MANAGEMENT IMPACTS

- ▶ **Total Area of Influence**
  - ▶ 185+ Acres
- ▶ **Upstream Area of Influence**
  - ▶ 64 Acres Dense Residential Treated On-Site
- ▶ **Downstream Direct Impact Area**
  - ▶ 121 Acres Dense Residential
- ▶ **Downstream Indirect Impact Area**
  - ▶ 535 Acres



# STORMWATER MANAGEMENT NEED

- ▶ Frequent flooding along South Main St. and throughout the downstream community
  - ▶ Flooding at Rodney Underpass
    - ▶ August 13, 2013 – 3.1” rainfall
    - ▶ Approximate 2-year Storm Event
    - ▶ Design 10-year storm event - 4.8”
- ▶ Flood Control Goals
  - ▶ Design to manage 6.0”





# STORMWATER MANAGEMENT DESIGN

## ▶ SWM Wet Pond

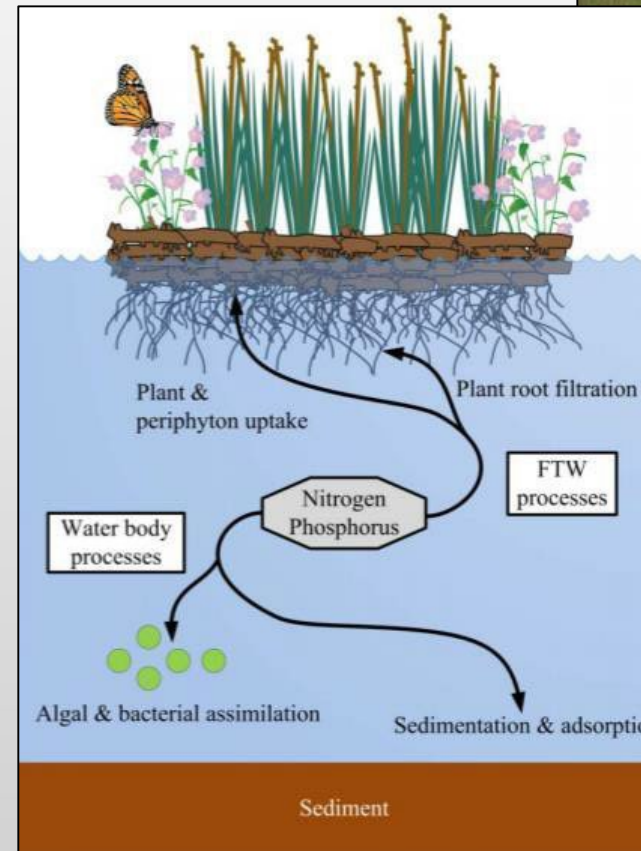
- ▶ Provides water quality treatment
  - ▶ Reduction of suspended solids
  - ▶ Reduction of nutrients
- ▶ Flood Mitigation
  - ▶ Manages larger contributing drainage areas
- ▶ Aesthetics / Park Features
  - ▶ Unique features – flowing spillways
  - ▶ Native species plantings
  - ▶ Support aquatic life



# STORMWATER MANAGEMENT DESIGN – BEST MANAGEMENT PRACTICES (BMPS)

## ► Floating Wetlands

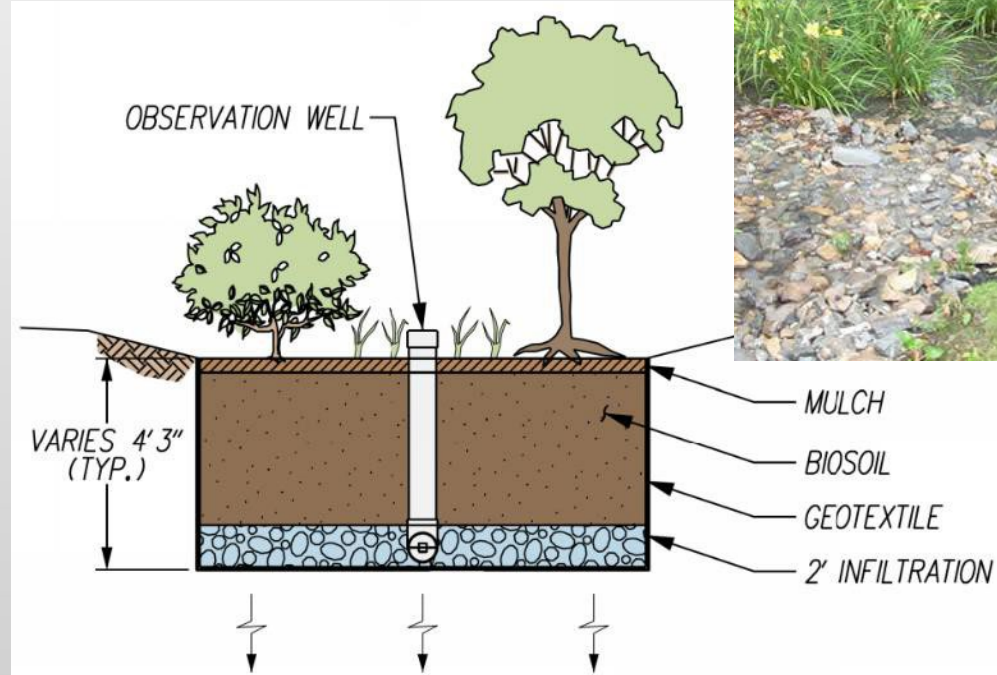
- Enhance nutrient removal (10-20%)
- Provide riparian habitat
- Stabilize shore lines
- Aesthetic enhancements
- Education and public involvement opportunities



# STORMWATER MANAGEMENT DESIGN – BEST MANAGEMENT PRACTICES (BMPS)

## ► Rain Gardens/Bioretention

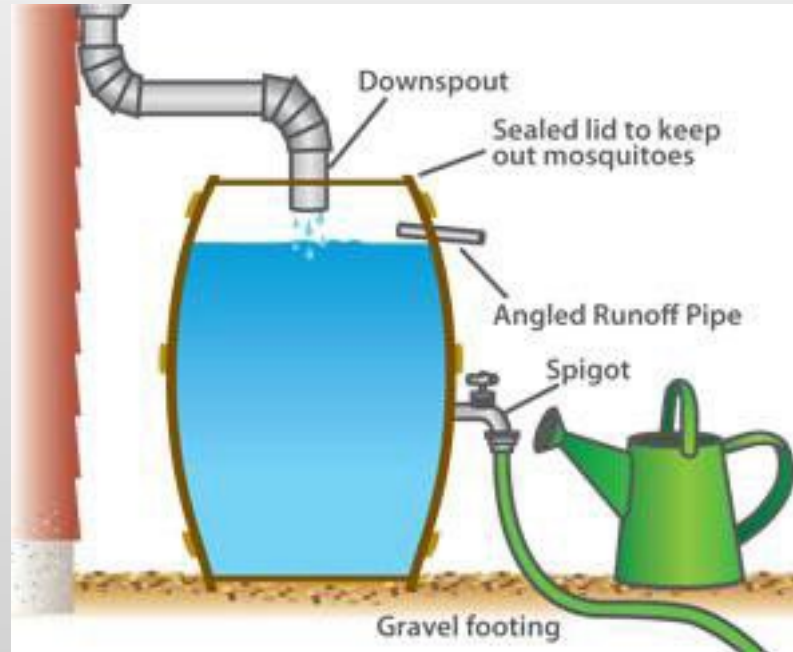
- 100% reduction of pollutants
- Enhance the landscape
- Completely customizable
- Educational Opportunities



# STORMWATER MANAGEMENT DESIGN – BEST MANAGEMENT PRACTICES (BMPS)

## ► Rain Water Harvesting

- Rain Barrels
- Easy to make and maintain
- Collectively reduce runoff
- Save on water usage
- Educational Opportunities



# Public Participation

# PUBLIC PARTICIPATION PROGRAM

- ▶ Mix of informal, online, and formal outreach
- ▶ Attended
  - ▶ New Night (June 2017);
  - ▶ Food and Brew Fest (July 2017);
  - ▶ Community Day Provided up-to-date project webpage and email address for inquiries/comments
- ▶ 3 Public Workshops were held: July 25, September 28, and November 8, 2017
- ▶ All meeting materials and surveys were posted online for those who could not/did not attend meetings



# You never know what journalists plan to quote!

- ▶ “You hear about things that people geek out about, and this is one of those things,” Filasky said. “We’re really excited.” – Newark Post Article
- ▶ “A hole in the ground isn’t as pretty as a hole in the ground with park amenities around it,” Filasky said. – Newark Post Article
- ▶ “We would need to take property, likely through the eminent domain process” Filasky said. – Newark Post Article
- ▶ The Comment sections are equally as entertaining!

[CitizenOfNewark](#) Aug 3, 2018 10:30am

*Tim Filasky is an idiot.*

# Concepts



# CONCEPT DESIGN #1 \$6 MILLION

## PARK AMENITIES

- 1 Drop Off / Parking - 12 Spaces (1 ADA)
- 2 On-Street Parking - +/- 26 Spaces
- 3 Improved Parking - 10 Spaces (1 ADA)
- 4 Pond
- 5 12' Wide Multi-Use Trail
- 6 8' Wide Multi-Use Trail
- 7 Pedestrian Crosswalk
- 8 Rest Stop
- 9 Raised Landscape Mounds
- 10 Riparian (Pond Side) Meadow
- 11 Existing Grove to Remain
- 12 Short Meadow



# CONCEPT DESIGN #2 \$8.1 MILLION

## PARK AMENITIES

- 1 Drop Off / Parking - 12 Spaces (1 ADA)
- 2 On-Street Parking - +/- 26 Spaces
- 3 Improved Parking - 10 Spaces (1 ADA)
- 4 Entry Plaza
- 5 Overlook Terrace
- 6 Raised Overlook
- 7 Accessible Fishing Pier
- 8 Pond
- 9 12' Wide Multi-Use Trail
- 10 8' Wide Multi-Use Trail
- 11 Large Group Pavilion
- 12 Renovated Basketball Court
- 13 Open Lawn (180' x 100')
- 14 Natural Play Area
- 15 Existing Grove to Remain
- 16 Pedestrian Crosswalk
- 17 Wetland Boardwalk
- 18 Rest Stop
- 19 Raised Landscape Mounds
- 20 Raised Stepping Stones
- 21 Riparian (Pond Side) Meadow



# CONCEPT DESIGN #3 \$9.8 MILLION

## PARK AMENITIES

- ▲ 1 Drop Off / Parking - 45 Spaces (2 ADA)
- ▲ 2 On-Street Parking - +/-18 Spaces
- ▲ 3 Entry Plaza
- ▲ 4 Destination Playground
- ▲ 5 Streetside Overlook Terrace
- ▲ 6 Accessible Pedestrian Bridge with Fishing Docks
- ▲ 7 Large Group Pavilion
- ▲ 8 Multi-Tiered Pond
- ▲ 9 12' Wide Multi-Use Trail
- ▲ 10 8' Wide Multi-Use Trail
- ▲ 11 Half-Court Basketball
- ▲ 12 Pavilion with Raised Overlook
- ▲ 13 Open Lawn (150' x 120')
- ▲ 14 Pavilion with Terraced Seating
- ▲ 15 Existing Grove to Remain
- ▲ 16 Pedestrian Crosswalk
- ▲ 17 Pavilion with Cut Stone Terrace
- ▲ 18 Rest Stop
- ▲ 19 Retaining Walls
- ▲ 20 Raised Stepping Stones
- ▲ 21 Riparian (Pond Side) Meadow





Photos Courtesy of Earthscape









Photo Courtesy of VA's SWCD



<http://www.lafayette.ca.gov/ImageRepository/Document?documentID=5522>



<https://pbs.twimg.com/media/C-WabyMXYA1zGgj.jpg>



# PREFERRED CONCEPT DESIGN

## Interpretive Signage

- ▶ Apply interpretive signs and messages associated with the overall theme and function of the site
- ▶ Tie themes to the activities on site, exemplifying sustainable design including water quality, conservation, native plants, erosion control, enhancement to natural habitats
- ▶ Information presented to encourage interaction
- ▶ Messages and information developed to the comprehension level of all ages and stages of development

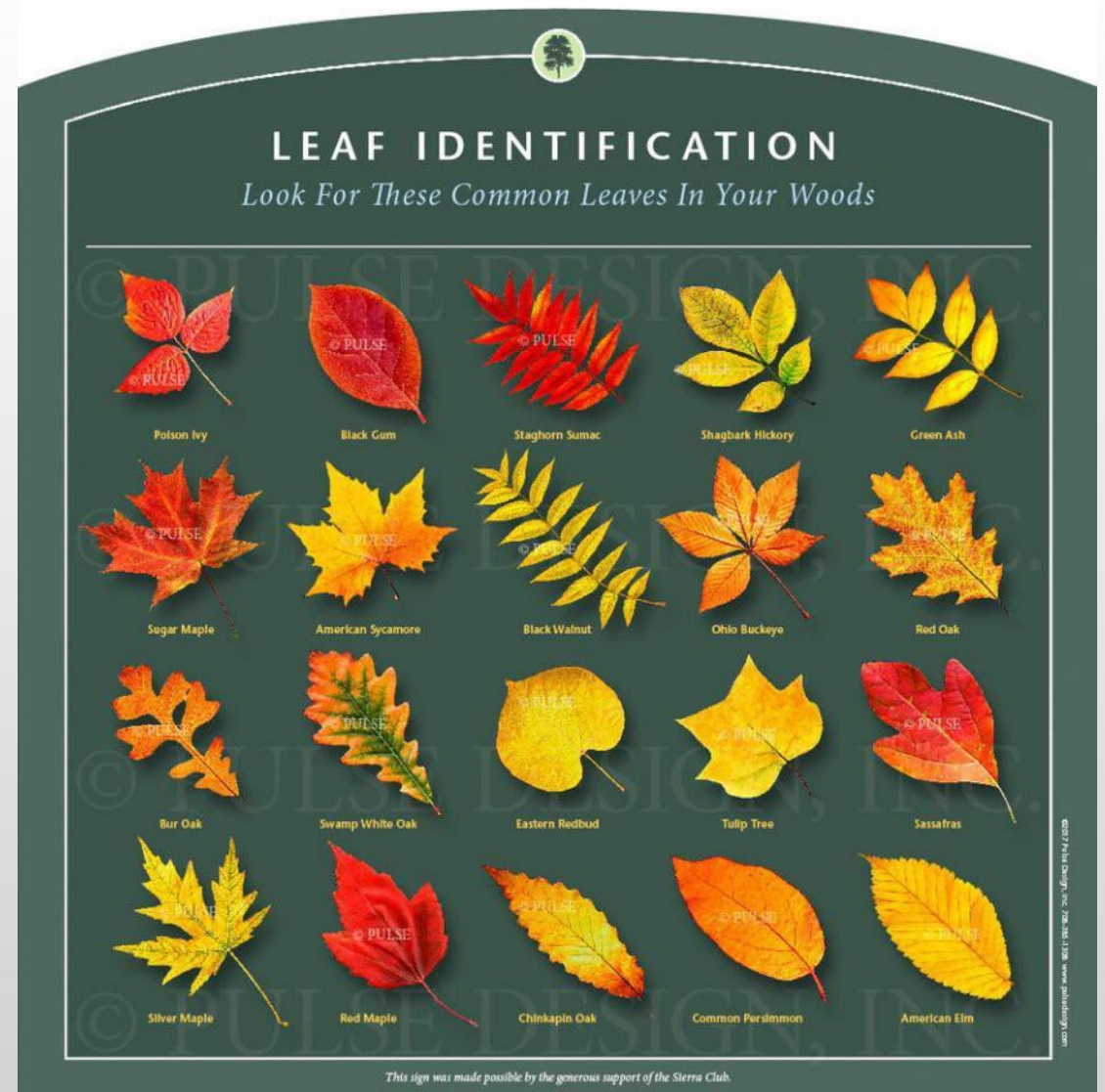


# PREFERRED CONCEPT DESIGN

## Interpretive Signage



Sample sign images courtesy of pulsedesign.com



This sign was made possible by the generous support of the Sierra Club.

**Tim Filasky, PE**  
**Director**  
**Public Works and Water Resources**  
**City of Newark**  
**220 South Main Street Newark, DE 19711**  
**302.366.7000**  
**[tfilasky@Newark.de.us](mailto:tfilasky@Newark.de.us)**